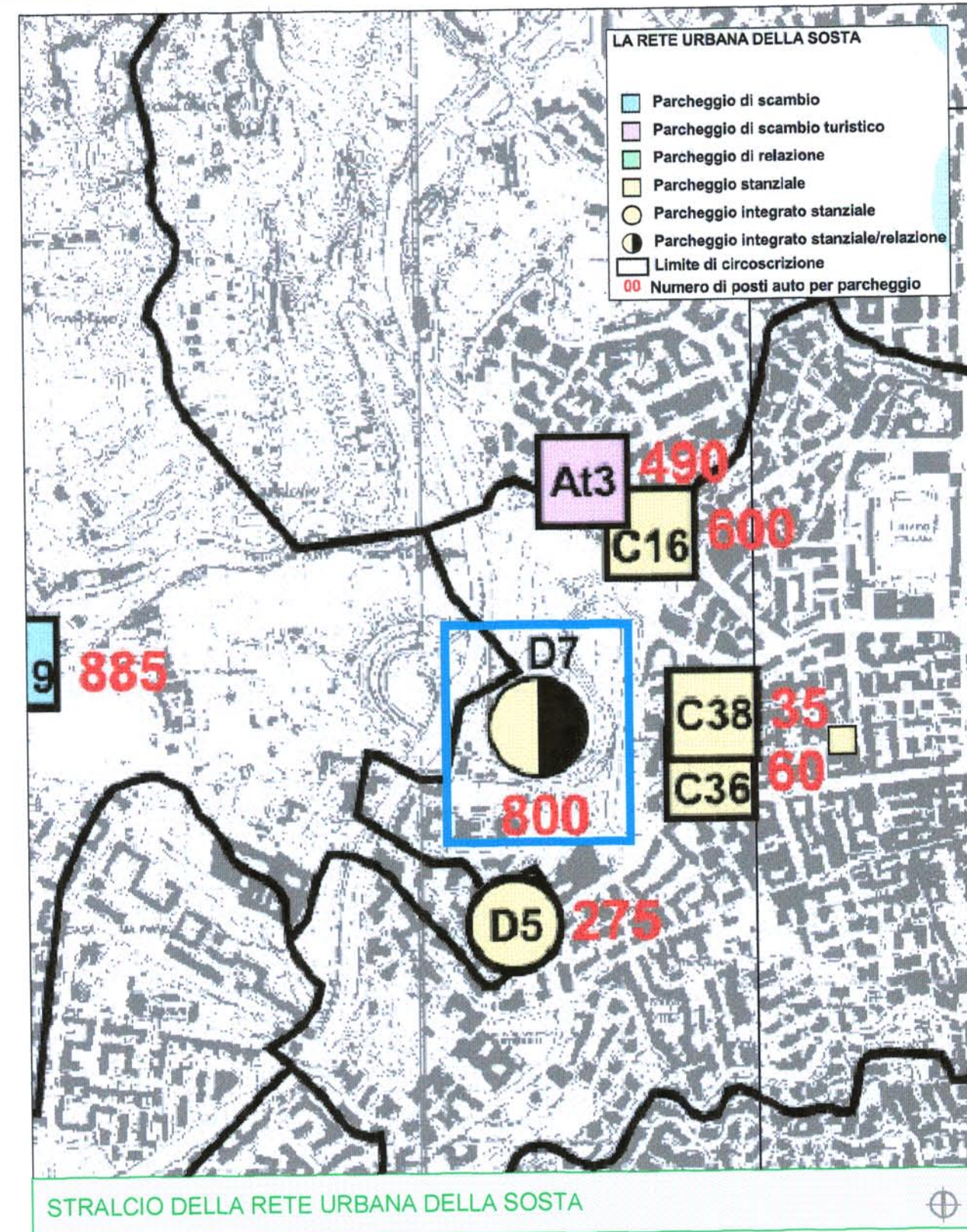
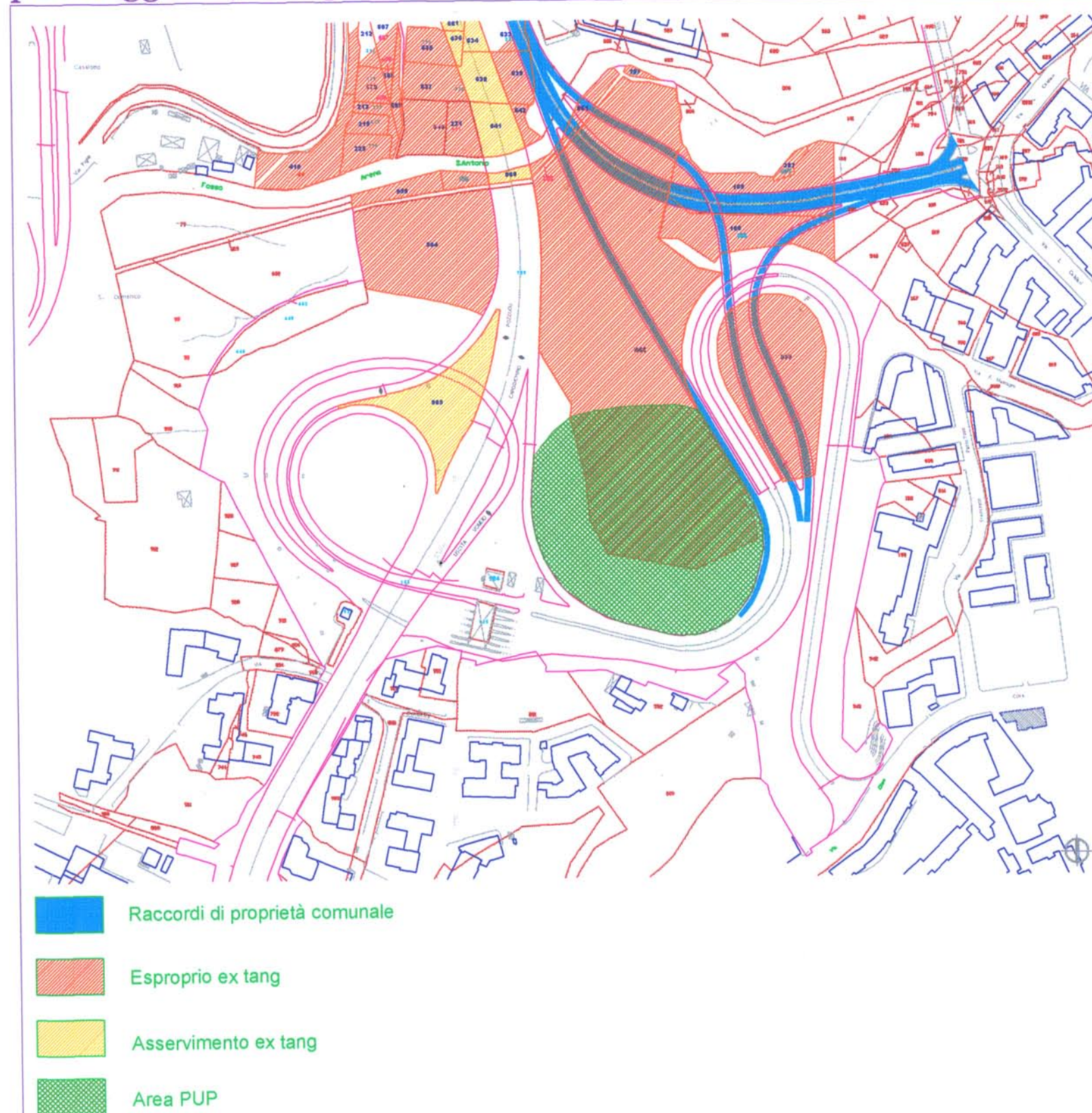




pup

parceggio D7 Tangenziale-Cilea

tavola n. 2 PARTICELLARE - STRALCIO RETE URBANA DELLA SOSTA



O.P.C.M. 3566 del 5/3/2007
COMMISSARIATO EMERGENZA TRAFFICO E
MOBILITA'
IL RESPONSABILE UNICO DEL
PROCEDIMENTO